



WARNING!

Read this Operator's Manual carefully before using this machine. Failure to understand and follow the contents of this manual may result in electrical shock, fire and/or serious personal injury.



READ CAREFULLY

JETWAVE[®]

HIGH PRESSURE CLEANERS

SENATOR[™] SILENT
HIGH PRESSURE WATER CLEANER



Cold Water



Diesel Driven

Record Serial Number below and retain product serial number which is located on nameplate.

UNIT SERIAL NO.	
ENGINE SERIAL NO.	
PURCHASE DATE	



Table of Contents	3
Safety Symbols	3
General Safety Warnings	3
Work Area Safety	3
Personal Safety	3
Service	4
High Pressure Cleaning Safety	4
Description, Specifications And Standard Equipment	5
Description	5
Specifications	5
Standard Equipment	5
Machine Assembly & Operation	6
Engine Oil	6
Pump	6
Pre-Operation Inspection	6
Machine and Work Area Set-Up	7
Water Supply	8
Operating Instructions	8
InteliUMS Screen Instructions & Faults	10-11
Transportation and Storage	12
Maintenance Instructions	12
Cleaning	12
Engine	12
Battery	12
Pump Lubrication/Maintenance	12
Preparing Pump for Cold Weather Storage	13
Optional Equipment	13
Machine Storage	13
Service And Repair	13
Disposal	13
Troubleshooting	14
Maintenance Log	15

*Original Instructions - English

Safety Symbols

In this operator's manual and on the product, safety symbols and signal words are used to communicate important safety information. This section is provided to improve understanding of these signal words and symbols.



This is the safety alert symbol. It is used to alert you to potential personal injury hazards. Obey all safety messages that follow this symbol to avoid possible injury or death.

- ⚠ DANGER** indicates a hazardous situation which, if not avoided, will result in death or serious injury.
- ⚠ WARNING** indicates a hazardous situation which, if not avoided, could result in death or serious injury.
- ⚠ CAUTION** indicates a hazardous situation which, if not avoided, could result in minor or moderate injury.
- NOTICE** indicates information that relates to the protection NOTICE of property.



This symbol means read the operator's manual carefully before using the equipment to reduce the risk of injury. The operator's manual contains important information on the safe and proper operation of the equipment.



This symbol means always wear safety glasses with side shields or goggles when handling or using this equipment to reduce the risk of eye injury.



This symbol indicates the risk of high pressure water directed at body parts, causing skin puncture and injection injuries.



This symbol indicates the risk of loud noises from the machine, causing irritation to your ears.



This symbol indicates the risk of breathing carbon monoxide and causing nausea, fainting or death.



This symbol indicates the risk of fire and explosion from gasoline or other sources causing burns and other injury.



This symbol indicates hot surfaces & hot vapours/air with the risk of burning the operator.

General Safety Rules

⚠ WARNING

Read and understand all instructions. Failure to follow all instructions listed below may result in electric shock, fire, and/or serious injury.

SAVE THESE INSTRUCTIONS!

Work Area Safety

- Keep work area clean and well lit. Cluttered benches and dark areas invite accidents.
- Keep bystanders, children, and visitors away while operating a pressure cleaner. Distractions can cause you to lose control.

Personal Safety

- Stay alert, watch what you are doing and use common sense when operating pressure cleaner. Do not use a pressure cleaner while you are tired or under the influence of drugs, alcohol, or medication. A moment of inattention while operating pressure cleaner may result in serious personal injury.
- Dress properly. Do not wear loose clothing or jewelry.
- Contain long hair. Keep your hair, clothing and gloves away from moving parts. Loose clothes, jewelry, or long hair can be caught in moving parts.

- Do not overreach. Keep proper footing and balance at all times. This enables better control of the pressure cleaner in unexpected situations.
- Use safety equipment. Always wear eye protection.
- Dust mask, non-skid safety shoes, hard hat, or hearing protection must be used for appropriate conditions will reduce personal injuries.

Machine use and Care

- Store idle pressure cleaners out of the reach of children and other untrained persons. Pressure cleaners are dangerous in the hands of untrained users.
- Maintain pressure cleaner with care.
- Check for misalignment or binding of moving parts, breakage of parts and any other condition that may affect the pressure cleaner operation. If damaged, have the pressure cleaner serviced before using. Many accidents are caused by poorly maintained pressure cleaners.

Use only accessories that are recommended by the manufacturer for your model and pressure & flow rated accordingly. Accessories that may be suitable for one pressure cleaner, may become hazardous when used on another pressure cleaner.

Service

- High Pressure Cleaner service must be performed **only by qualified repair personnel**. Service or maintenance performed by unqualified personnel could result in a risk of injury.

HIGH PRESSURE CLEANING SAFETY

WARNING

This section contains important safety information that is specific to this pressure cleaner.

Read these precautions carefully before using this drain Cleaning Machine to reduce the risk of electrical shock or other serious injury.

SAVE ALL WARNINGS AND INSTRUCTIONS FOR FUTURE REFERENCE!

Keep this manual with machine for use by the operator.

- Never operate the unit without a pressure control mechanism. Hoses can whip, causing striking injuries and spray can penetrate skin and cause serious injury.
- High pressure water can inject under skin resulting in serious injury including amputation. Do not direct spray at people or animals.
- Do not operate unit above the rated working pressure or 60°C (inlet water temperature). This increases the risk of injury, including burns, and damage to the unit.
- One person must control the high pressure cleaning process and water flow.
- Always use appropriate personal protective equipment while handling and using high pressure cleaning equipment. Appropriate personal protective equipment (PPE) includes safety glasses and gloves, and may also include equipment such as latex or rubber gloves, face shields, goggles, protective clothing, respirators, head protection, hearing protection and steel toed footwear.
- Practice good hygiene. Use hot soapy water to wash hands and other body parts exposed to drain contents after handling or using drain cleaning equipment.
- Do not eat or smoke while operating or handling high pressure cleaning equipment. This will help prevent contamination with toxic or infectious material.
- Do not spray toxic or flammable liquids. This will reduce the risk of burns, fire, explosion or other injury.
- Reduce the risk of burns, explosions and serious injury while handling and using diesel.
- Engines produce carbon monoxide, a colorless, odorless poison gas. Breathing carbon monoxide can cause nausea, fainting or death. Do not start and run engine in an enclosed area, even if doors and windows are open. Only operate outside.

- Never attempt to refuel the unit whilst engine is running. Do not spill fuel on or near exhaust take extra care in the refueling process as vapors or liquid can combust due to heat.
- Hot surfaces can cause burns and fire. Keep body parts and flammable material away from hot surfaces.
- Read and understand this manual, the engine manual and the warnings and instructions for all equipment and material being used with this pressure cleaner before operating. Failure to follow all warnings and instructions may result in property damage and/or serious injury.
- Follow all applicable workplace health and safety regulations and guidelines concerning the use of this equipment.
- Read and understand Australia/New Zealand standard AS/NZS4233.1:13 High Pressure Water Jetting Systems Part 1: Safe Operation & Maintenance.

If you have any question concerning this Jetwave® product:

- Contact your local Jetwave® distributor.
- Visit jetwave.com.au/find-a-dealer to find your local Jetwave contact point.

Description, Specifications and Standard equipment

Description

The Jetwave® Senator Silent™ is a diesel combustion engine powered Cold Water High Pressure Cleaner machine its designed to use a combination of water pressure and flow to clean different surfaces from dirt, grease, oil & grime. Water is pumped through the high pressure plunger pump at increased pressure and flow allowing water to be used at such high pressure to remove dirt and grime from surfaces. The Senator Silent™ High Pressure Cleaner is equipped with a diesel powered KOHLER™ engine to drive the triplex pump.



Figure.1 - Senator Silent

Standard equipment

Jetwave® Senator Silent™

High Pressure Cleaner comes with:

- High Pressure gun & back part lance
- Variable dual lance with high and low nozzles or Single lance depending on performance.
- 15m of DWB 3/8" high pressure hose with M22 or M24 couplings on each end (When applicable)
- Engine Operator's Manual (diesel)
- Operator's Manual
- Maintenance Schedule



Figure.2 - Machine Serial Number

MODEL	PUMP	PRESSURE (PSI/BAR)	FLOW RATE (L/PM)	ENGINE	NOZZLE SIZE	APROX UNIT WEIGHT (KG)	MACHINE DIMENSIONS (mm)
Senator Silent	JW Triplex Plunger	3000 / 200	41	KOHLER KDI 1903	12	530	1600(L)x850(W)x1300(H)
Senator Silent	JW Triplex Plunger	4000 / 275	20	KOHLER KDI 1903	05	530	1600(L)x850(W)x1300(H)
Senator Silent	JW Triplex Plunger	4060/ 280	31	KOHLER KDI 1903	08	530	1600(L)x850(W)x1300(H)
Senator Silent	JW Triplex Plunger	5000 / 345	16	KOHLER KDI 1903	04	530	1600(L)x850(W)x1300(H)
Senator Silent	JW Triplex Plunger	5075 / 350	23	KOHLER KDI 1903	055	530	1600(L)x850(W)x1300(H)
Senator Silent	JW Triplex Plunger	7250 / 500	18	KOHLER KDI 1903	035	530	1600(L)x850(W)x1300(H)

The machine serial number is located inside the machine. The first letter & digits indicate the year and month of the manufacture. (G = 2021 (Year), 4 = April (Month)).

NOTICE This machine is made to high pressure water clean. If properly used it should not damage surfaces that is in good condition and properly designed, constructed and maintained. If the surface is in poor condition or not properly designed, constructed or maintained, the water cleaning process may not be effective or could cause damage to the surface. The best way to determine the condition of a surface before cleaning is through visual inspection.

Improper use of this pressure cleaner can damage the unit and the surface. This machine may not clear all substrate debris.

Machine Assembly

⚠ WARNING

To prevent serious injury during use and prevent machine damage, follow these procedures for proper assembly.

Engine Oil

NOTICE The unit is shipped with oil in the engine. Operating the engine with low or no oil will result in engine failure. See supplied engine operator's manual for specific information on checking oil, adding oil and oil selection.

Pump

The unit is shipped with oil in the pump (note/breather may not be installed, please check). Check oil level (ensure half way on sight-glasses) per Maintenance section.

Pre-Operation Inspection

⚠ WARNING



Before each use, inspect your pressure cleaner and correct any problems to reduce the risk of serious injury from high pressure water and other causes and prevent unit damage.

Always wear appropriate safety equipment, when inspecting your unit.

1. Make sure that the battery isolator (if applicable) and engine switch is in the OFF position.

2. Clean any oil, grease or dirt from the equipment, including the handles and controls. This aids inspection and helps prevent the machine or control from slipping from your grip.
3. Inspect the high pressure cleaner and accessories for the following:
 - Proper assembly and completeness.
 - Broken, worn, missing, misaligned, binding or loose parts.
 - Presence and readability of the warning labels. (See Figure 3.)
 - Any other condition which may prevent the safe and normal operation.

If any problems are found, do not use the unit until the problems are corrected.



Figure.3 - Senator Silent Warning Labels

Clean water filter (Figure 4). Unscrew the housing from the filter and remove and clean the mesh filter. Dirt and debris can restrict the water flow to the pump and cause performance issues.

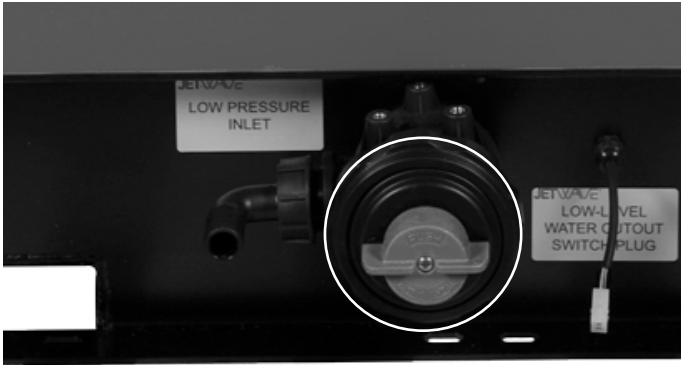


Figure.4 - Senator Silent Water Filter

4. Inspect the pressure cleaner nozzle orifices for any damage or blockage. Blockages can be cleaned with a nozzle cleaning tool. Use care not to enlarge nozzle orifices while cleaning. Damaged nozzles or nozzles with enlarged orifices can decrease unit performance and should be replaced.
5. Inspect the hoses, connectors and fittings for wear and damage. If there are any kinks, cracks, breaks or wear through the outer jacket of the hose or other damage, do not use the hose. Damaged hoses can burst or leak high pressure water and cause serious injury. Replacement hoses and fitting should be rated at or higher than the unit pressure and temperature rating.
6. Inspect and maintain the engine per the engine operator's manual.
7. Check fuel tank level. If needed, add diesel fuel. See engine operator's manual for requirements. Use caution when handling fuel. Work in a well ventilated area. Never fill the tank while unit is running or hot, do not overfill tank and do not spill fuel. Make sure tank cap is securely closed.



Figure.5 - Diesel fuel supply tank

8. Check the oil level(s) in the pump through the sight glass and add oil if needed (see Maintenance Instructions section). Inspect Engine as directed in the engine operator's manual.

Machine and Work Area Set-up

⚠ WARNING



Always wear safety glasses, gloves and other appropriate protective equipment when setting up your pressure cleaner. Rubber soled, non-slip shoes can help prevent slipping on wet surfaces.

Engines and burners produce carbon monoxide, a colorless, odorless poison gas. Breathing carbon monoxide can cause nausea, fainting or death. Do not start and run engine in an enclosed area, even if doors and windows are open. Only operate outside.

Set-up the unit and work area according to these procedures to reduce the risk of injury from high pressure water, chemical burns, infections, carbon monoxide and other causes, and prevent unit damage.

1. Check work area for:
 - Adequate lighting.
 - Flammable liquids, vapors or dust that may ignite. If present, do not work in area until sources have been identified and corrected. The machine is not explosion proof and can cause sparks.
 - Clear, level, stable dry place for machine and operator.
 - If needed, remove the water from the work area. Wood or other coverings may need to be put down.
 - Unit location that is in a well ventilated outdoor area. Do not place the unit indoors, even with doors and windows open. Unit can be located remotely from the point of use.
 - Suitable water supply. Clear path to transport the unit to the set up location.
2. Inspect the surface to be cleaned, and make sure no materials or elements are in the way of the unit.
3. Determine the correct equipment for the application.
4. Make sure all equipment has been properly inspected.
5. Evaluate the work area and determine if any barriers are needed to keep bystanders away. Bystanders can distract the operator. If working near traffic, erect cones, signs or other barriers to alert drivers.
6. Take the unit to the well-ventilated outdoor work area along the clear path. See Transportation Section. Be aware of possible slip hazards. Wear appropriate footwear to help prevent slips.

Water Supply

Run a hose from the water source tank to the unit water inlet. Use the largest diameter, shortest length hose possible. A 3/4" (20mm) I.D. Inlet hose is the minimum recommended size. An appropriate backflow prevention device should be used to comply with all local codes and ordinances.

Dirt and debris in the water supply can cause excess pump wear, clog the unit filter, nozzles and reduce performance.

Do not use water from ponds, lakes or other sources that may be contaminated.

Fill the water tank prior to starting the unit (If Applicable).

The tank is equipped with a: (If Applicable)

- Low water level shut-off (If Applicable) to prevent pump damage from insufficient water. This will shut OFF the engine when the tank water level falls below a predetermined level.
- Float valve to shut-off inlet water when the tank is full, preventing water spillage through the tank vent.

When using in cold weather, use precautions to prevent water from freezing in the pump. This can damage the pump.

Hose Set-Up

Use care when routing hoses. Routing hoses over rough surfaces, sharp edges, crossing hoses, etc. can damage the hose jacket. Keeping the unit hose on the reel(s) will help to minimize hose damage.

Operating Instructions

⚠ CAUTION



Always wear eye protection to protect your eyes against dirt and other foreign objects. Always wear appropriate personal protective equipment for the work environment.

Never operate the unit without the hose attached to a spray gun. Hose can whip, causing striking injuries and spray can penetrate skin and cause serious injury.

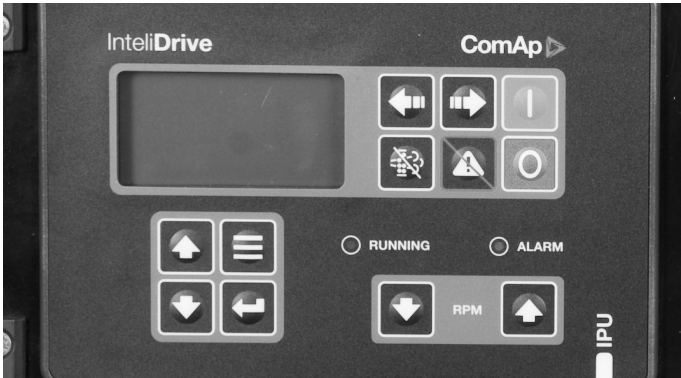
High pressure fluid can inject under skin resulting in serious injury, including amputation. do not direct spray at people or animals. do not operate unit above pressure rating. This increases the risk of injury, including burns, and damage to the unit. One person must control the unit process and water flow.

Always use appropriate personal protective equipment while handling and using high pressure cleaning equipment. Appropriate personal protective equipment always includes safety glasses and gloves, and may also include equipment such as latex or rubber gloves, face shields, goggles, protective clothing, respirators, and steel toed footwear.

Follow operating instructions to reduce the risk of injury from whipping hoses, high pressure liquid injection, carbon monoxide and other causes.

1. Make sure that machine and work area is properly set up and that the work area is free of bystanders and other distractions. If the unit is located remotely from the point of use, another person may be located at the unit.
2. Attach the gun to the high pressure hose via coupling system.
3. Attach the hose to the high pressure pump/valve/facia outlet.
4. Turn the battery isolator switch ON (If Applicable) and confirm the Emergency stop (If Applicable) button is in the out position (rotate button clockwise).
5. Confirm that the water supply is attached and turned on to low pressure pump/facia inlet. Never start the engine without the water supply turned ON. This can damage the pump.
6. Wash Wand Lock Out – the wash wand includes a lock out on the back of the trigger. Flip the lock out down to prevent the operation of the trigger when the wash wand is not in use.

7. Ensure key is inserted and turned into the on position, then push the green START button, a preheating operation will happen then the engine will start once this operation has complete. (Ensure IntelliUMS LCD Screen is in MANUAL mode and ensure any faults have been cleared and checked)
8. With the wand pointed in a safe direction, unlock the lock and then squeeze the wash wand trigger. Do not exceed the machine pressure rating. Release the wash wand trigger to stop cleaning



If the unit will not generate the rated pressure or is erratic;

- Turn unloader valve clockwise to increase pressure. Do not force (If applicable).
- Inspect system for leaks. Use caution during inspection to prevent injury. If leaks are found, shut unit OFF before fixing.
- Ensure the front part lance with nozzle is connected.
- Turn the unit OFF. Check the inlet hose and filter and make sure that they clear of debris.
- Make sure there is adequate water flow to the unit.
- Turn the unit OFF. Remove the nozzle and clean the orifices with the nozzle cleaning tool.
- Ensure correct nozzle orifice size is used and no signs of excessive wear are evident.
- Activate trigger and run the unit to remove air or debris from the system. Turn the unit OFF before removing or attaching the lance/nozzle.

Pressure Washer Operator Specifics

You must be able to place one hand on the gun at all times to control and support the lance. Assume proper operating position for long term ergonomics.

This operating position will help to maintain control of the gun and lance.

1. When using pressure washer use both hands to grip and direct the wash wand for greater control. Never direct the wash wand at people. High pressure fluid can inject under skin resulting in serious injury. Never direct wash wand at electrical equipment or wiring to reduce the risk of electrical shock.
2. Control the flow of water with the trigger. Use care when using the pressure washer. Holding the nozzle too close to a surface can damage it. Test a small, inconspicuous area to confirm the settings work as desired.

Machine Shut Down Procedure

1. When high pressure cleaning task is complete, release high pressure trigger and return to the unit controls with gun and spray lance.
2. Press the RED stop button on the IntelliUMS Controller, a cool-down phase will now initiate, machine will automatically turn off after cool-phase is complete, then ensure key is in the off position. (In an emergency use the EMERGENCY STOP button to completely shut down the unit)
3. Turn water supply OFF.
4. Release system back pressure by pressing the trigger on the spray gun (if applicable). This is very important as it is dangerous to leave pressure in the line.
5. Disconnect high and low pressure hoses and coil the assembly for safety and proper storage.

InteliUMS™ Instructions

The Jetwave Senator Silent™ is controlled by our InteliUMS™ digital display system. Each control and button is detailed below.



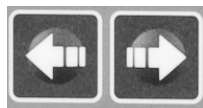
START BUTTON Press this button in MAN mode to initiate the start sequence of the engine.



STOP BUTTON Works in MAN mode only. Press this button to initiate the stop sequence of the engine. Repeated pressing or holding the button for more than 2seconds will cancel current phase of stop sequence (e.g cooling) and next phase will continue.



MENU BUTTON Use this button (short press) to switch over measurement screens. This button (long press) is also used for switching over display pages.



MODE LEFT & RIGHT Use this button to change the MODE from MAN to AUTO & vice versa.



UP & DOWN Use this button to go up or down on the menu.



ENTER BUTTON Use this button to finish editing a set point or moving right in the history page.



FAULT RESET Use this button to acknowledge alarm and clear fault alarms.



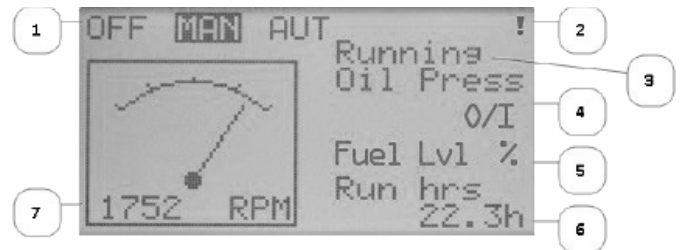
ALARM LED



RUNNING LED

Main Measurement Screen

The main measurement screen below will show live data read outs.



1. Operation mode of the engine
2. Indication: "L" = Access lock, "!" = active Alarm
3. Status of the engine
4. AIN1 - Oil Pressure
5. Fuel level percentage
6. Unit Operation Run Hours
7. Current Engine RPM

List of possible alarms

WRN = Machine Warning (will not shutdown)

SD = Machine Shut-Down

Events Specification	Protection Type	Description
Wrn Oil Press	WRN	Oil pressure is low.
Sd Oil Press	SD	No oil pressure.
Wrn Fuel Level	WRN	Fuel level is below 10%.
Sd Fuel Level	SD	Fuel level is below 5%.
Ubat	WRN	Battery voltage below 10.0v DC.
Battery Flat	SD	If the controller switches off during starting sequence due to bad battery condition it doesn't try to start again and activates this protection.
RPM meas fail	SD	Engine asking to read correct RPM for whatever reason RPM tp picked up.
Overspeed	SD	Engine RPM above 3600RPM.
Underspeed	SD	During starting of the engine when the RPM reached the value of Starting RPM setpoint the starter is switched off and the speed of the engine can drop under Start RPM again. Then the Underspeed protection becomes active. Protection evaluation starts 5 seconds after reaching StartingRPM.
EmergencyStop	SD	Emergency stop active.
Stop fail	SD	Engine stop failed, when not meant to.
WrnServiceTime	WRN	Machine done 50hr since last service.
ChrgAlternFail	WRN	Failure of alternator for charging the battery.
Low Water Level	SD	Water tank level low or low level water switch has been activated.
Pump Pressure	SD	Pump pressure over 5800psi (if applicable)
Common Engine Fault	WRN	Fault in engine

Transportation and Storage

1. Turn off the fuel valve (if applicable) and the battery isolation switch.
2. Drain water from unit as needed.
3. Coil hoses and secure equipment appropriately. All loose material must be removed. Transport remote reel separate from unit.
4. Unit weighs 530kg (approx.) Use appropriate equipment and methods to load and transport.

Maintenance Instructions

⚠ WARNING

Before performing any maintenance, engine switch battery isolation switch should be in OFF position. Open water control valve to release any fluid pressure in system.

Always wear safety glasses and gloves when performing any maintenance to help protect against drain chemicals and bacteria.

Cleaning

The hose should be cleaned as needed with hot, soapy water and/or disinfectants. Do not allow water to enter the engine or electrical system. Do not clean with pressure washer. Wipe the unit down with a damp cloth.

Engine

Maintain the engine as directed in the engine operator's manual supplied with the unit.

Battery

To change battery (if applicable)

1. Unclip strap (if applicable) holding battery box top on, remove top.
2. Disconnect ground (-) cable connection first, followed by positive (+) cable connection.
3. Remove battery.
4. Reverse procedure to install.

Replacement batteries should have the following specifications:

- BCI Group/Type: U1
- Size (L x W x H): 196 x 128 x 159 (mm)
- Voltage: 12
- Cold Cranking Amps (CCA): 350
- Reserve Capacity (RC): 45
- Terminal Type: Offset Lug Terminal (OLT)
- Assembly Type: C
- Max Charging Volt: 14.8

Pump Lubrication/Maintenance

Check the pump oil level prior to each use. Place the unit on a level surface. Wipe any dirt and debris from the area of the dipstick and sight-glass. Oil level should be at the middle of the sight-glass (Figure 16). If needed, remove the dipstick and add SAE 15W-40 Mineral non-detergent oil, fill to half-way on the sight-glass. Do not overfill, reinstall dipstick.

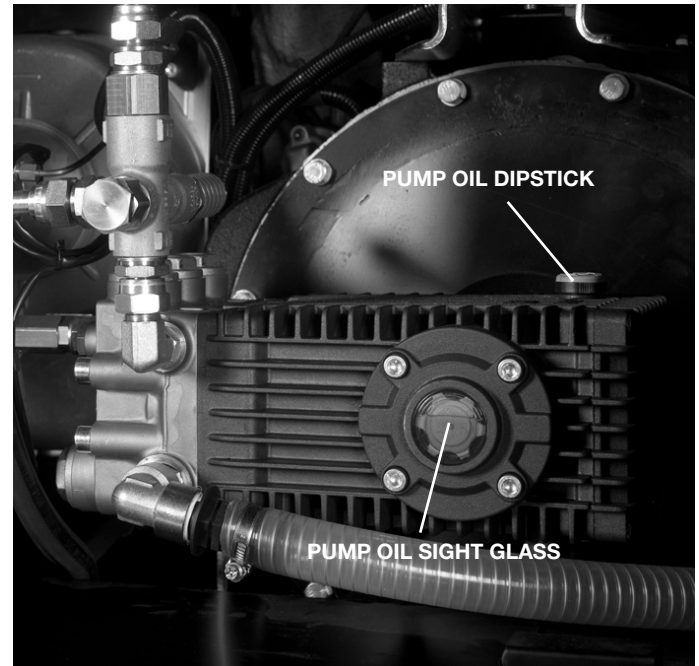


Figure.16 - Checking Pump Oil Level

Change oil in pump after first 50 hours of operation and every 250 hours of operation after that. With the pump warm from operation, remove plug on bottom of pump and drain oil into suitable container. Replace plug. Fill to approximately half-way on the sight-glass with SAE 15W-40 Mineral non-detergent oil using the checking procedure. Approximately 1000 ml of oil are required to change the pump oil.

At 1000 hours of use (less in severe use conditions) the unit should be taken to a Jetwave Independent Service Center for pump seal and valve service.

Preparing Pump for Cold Weather Storage

If the unit will be stored under conditions where the temperature is near or below 0°C, the unit must be properly prepared. If water freezes in the pump, it can damage it.

After the tank is drained (if applicable), remove the hose from the water inlet filter. Open all valves in the system and use compressed air to force any water out of the system. This can also be used to remove water from the hoses.

Machine Storage

Store the unit in a well ventilated area protected from the weather elements. Keep the machine in a locked area that is out of reach of children and people unfamiliar with High Pressure Cleaners. This machine can cause serious injury in the hands of untrained users. See Maintenance section for information on cold weather storage. See engine operator's manual for specific information on engine storage.

Service And Repair

WARNING

Improper service or repair can make machine unsafe to operate.

The "Maintenance Instructions" will take care of most of the service needs of this machine. Any problems not addressed by this section should only be handled by an authorized Jetwave service technician.

Unit should be taken to a Jetwave Independent Service Center or returned to the factory.

For information on your nearest Jetwave Independent Service Center or any service or repair questions:

- Contact your local Jetwave distributor.
- Visit jetwavegroup.com.au/find-a-dealer/ to find your local Jetwave contact point.
- Contact Jetwave Technical Service Department at service@jetwave.com.au or call (08) 8371 3599

Disposal

Parts of the unit contain valuable materials and can be recycled. There are companies that specialize in recycling that may be found locally. Dispose of the components in compliance with all applicable regulations. Contact your local waste management authority for more information.

Trouble Shooting

FAULT	CAUSE	SOLUTION
Pump runs normally but pressure does not achieve rated value.	Pump is sucking air. Valves are worn or dirty. Unloader valve packing worn. Nozzle incorrect or worn. Worn piston packing. Dirty inlet filter.	Check that all hoses and fittings are airtight. Check, clean or replace. Check and replace. Check and replace. Check and replace. Check and clean.
Fluctuating pressure.	Valves dirty, worn or stuck. Pump sucking air. Worn piston packing. Dirty filter.	Check, clean or replace. Check that all hoses and fittings are airtight. Check and replace. Check and clean.
Presence of water in oil.	High humidity in air. Piston packing or oil seal worn. Water entering through breather.	Check and change oil twice as often. Check and replace.
Water dripping from pump.	Piston packing worn. Piston guide o-rings worn.	Check and replace. Check and replace.
Dripping oil.	Worn oil seals. Oil coming out of breather.	Check and replace. Pump oil level overfull.
Motor does not start when switched on	Plug not well connected or unreliable power supply. Earth leakage overload.	Check plug, cable and switch. Check earth leakage.
No chemical flow	Detergent valve closed Low detergent level Chemical screen dirty	Open detergent valve Fill detergent container Clean detergent screen

Maintenance Log

Hour Meter Reading	Date	Maintenance Performed	Service Agent

Notes



📍 10 - 16 Smith Street, Thebarton, 5031
Adelaide, South Australia, AU
☎ +61 8 8371 3599
✉ sales@jetwave.com.au
🌐 jetwave.com.au



jetwavegroup



jetwave.group



jetwavegroup



jetwavegroup



jetwave-group